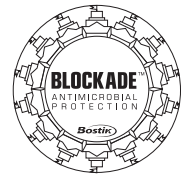


GOLDPLUS™ Roller-applied Anti-fracture and Waterproofing Membrane



PRODUCT DESCRIPTION

GoldPlus™ is a ready-to-use, roller-applied, latex waterproofing and anti-fracture membrane for use beneath thin set ceramic tile installations on vertical and horizontal surfaces. GoldPlus exceeds the requirements of ANSI A118.10 (specification for waterproof membranes beneath thin set tile and stone) and the proposed ANSI A118 specification for crack isolation membranes. Use GoldPlus in commercial or residential applications. Apply over concrete, cement block walls, cement backer board, gypsum board, exterior grade plywood (interior, dry installations only) and mortar beds.

This product contains Bostik's Blockade™ Antimicrobial Protection, which inhibits the growth of bacteria, mold or mildew on the surface of the dried mortar; the dried mortar resists stains caused by mold.

PRODUCT USES

Use to prevent tile cracking caused by the shrinkage of new concrete slabs and to prevent cracks up to 1/8" from transferring through tile or stone. Use GoldPlus to waterproof showers, lavatories, fountains, commercial kitchens and restaurants, etc.

SURFACE PREPARATION

All wet areas must have proper slope to drains. All surfaces must be structurally sound, clean dry and free of contaminants that may interfere with proper bond.

APPLICATION

Read and understand data sheet before beginning the installation. Follow applicable ANSI, TNCA, NTCA installation specifications. Ambient temperatures must be at least 50°F. Apply with a brush, roller or trowel. When applying with a trowel, spread with the notch side (3/16" v-notch) then flatten with the smooth side of the trowel.

Pre-treat all edges, corners, coves and where floors meet walls a minimum 6" on either side with a heavy coat, using a brush, roller or 3/16" V-notch trowel. Cracks up to 1/8" and gaps between plywood should be filled with the membrane. When treating cracks in concrete floors, the membrane must extend at least one tile length on either side of the crack.

After pre-treatment of coves, corners and cracks, apply a continuous film at 20-30 mils (thickness of a drivers license) over the remaining area. Allow it to dry for 1-3 hours.

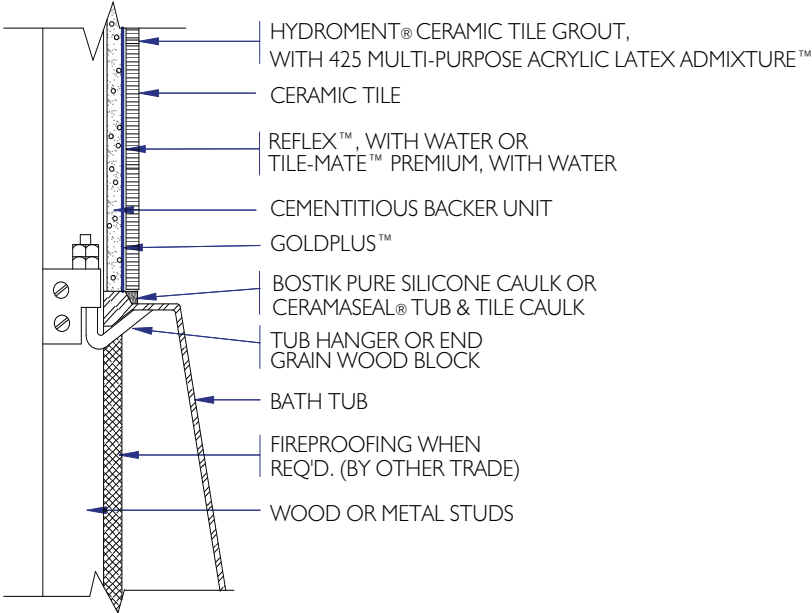
SECOND COAT: Once the first coat is dry, apply a second coat at the same thickness. Allow the second coat to dry for 1-3 hours or until the membrane is dry and no longer tacky.

Install tile or stone over the cured GoldPlus membrane with Hydroment® ReFlex™, Single-Flex™, Single-Flex FS™, PM™ Thin-Set, Tile-Mate™ or Tile-Mate™ Floor & Wall mixed with Hydroment StoneWall™, Big Tile & Stone™, ReFlex, Single-Flex, Single-Flex FS, Porcelain-Mate™, PM, 425 Multi-Purpose Acrylic Latex Admixture™ or 447 Flex-A-Lastic Flexible Mortar Admixture™; or Hydroment Ultra-Premium™, Multi-Purpose™ or Professional Grade™ Mastics; Hydroment 1900™ Modified Epoxy, or Bostik EzPoxy™.

DRY TIME

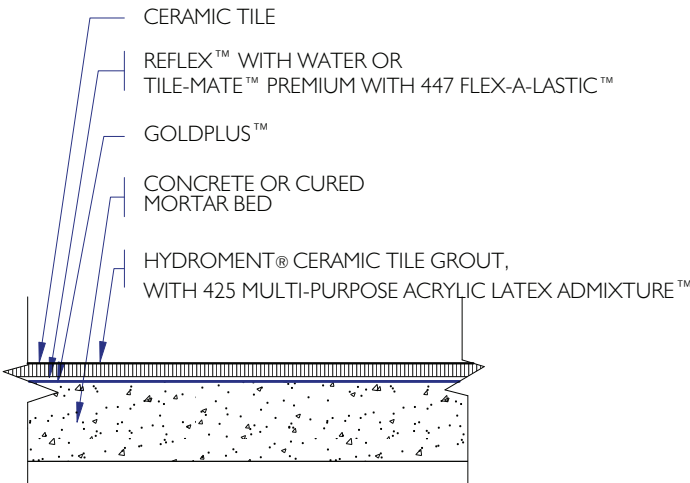
GoldPlus requires 1-3 hours drying time depending on temperature and humidity before installing tile or applying the second coat. Allow 72 hours before exposing the installation to moisture or prior to conducting a water test.

BATHTUB WALLS— Wood or Metal Studs



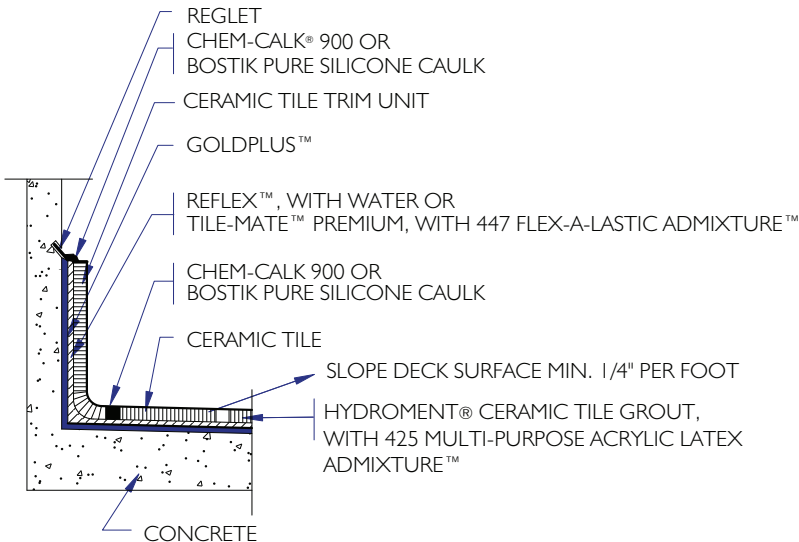
B412-2000

FLOORS, INTERIOR— Waterproof Membrane



F122-2000

FLOORS, EXTERIOR— Balcony Deck



F104-2000

ANSI A118.10 TEST RESULTS

TEST	RESULT	ANSI REQUIREMENT
M-4.1 Mold Growth	“Does not support mold growth.”	“Shall not support mold growth.”
M-4.3 Breaking Strength	355 psi	170 psi minimum
M-4.2 Seam Strength	30 lbs/ 2" width	16 lbs/ 2" width
M-4.5 Waterproofness	no moisture penetration @ 48 hours	no moisture penetration @ 48 hrs
M-5 Shear Strengths		> 50 psi
M-5.3 7 Day	205 psi	> 50 psi
M-5.5 7 Day Water Immersion	100 psi	> 50 psi
M-5.6 4 Week Shear	165 psi	> 50 psi

Proposed ANSI 118 Crack Isolation Specification: Pass 0.125" (1/8")

COVERAGE

45 ft²/gallon. Coverage will vary depending on the roughness of the substrate.

CLEAN UP

GoldPlus is difficult to remove once it has dried. Clean all tools and equipment with soap and water before the material dries.

LIMITATIONS

- Do not freeze
- Do not apply if surface temperature will be less than 50°F within 72 hours
- Do not apply over wet surfaces or surfaces subject to hydrostatic head
- Do not use to bridge dynamic joints such as cold, control or expansion joints
- Do not use as an adhesive
- Do not use as a wearing surface
- Not intended to isolate cracks larger than 1/8" wide or those caused by excessive structural movement
- Not for use over poured gypsum concrete such as "gypcrete"
- Not for use as a vapor barrier to eliminate subfloor moisture
- Wet areas must be sloped to drain according to TNCA guidelines
- GoldPlus must have minimum dry film thickness of 30 mL (roughly the thickness of a drivers license)



Middleton, MA 01949
1-800-7/BOSTIK
1-800-726-7845

www.bostik-us.com

PLANT LOCATIONS

Temecula, CA 92590
Conyers, GA 30207
Paulsboro, NJ 08066

LIMITED WARRANTY

Bostik, Inc. warrants that the product conforms with Bostik's written specifications and is free from manufacturing defects. A PURCHASER'S SOLE REMEDY FOR NONCOMPLIANCE WITH THIS WARRANTY SHALL BE THE REPLACEMENT OF THE PRODUCT OR REFUND OF THE PURCHASE PRICE. Purchasers may address their warranty claims to Bostik, Inc., 211 Boston St., Middleton, MA 01949, Attn: Customer Service or call Bostik at 1-800-7/BOSTIK. TO THE MAXIMUM EXTENT ALLOWED BY LAW, BOSTIK DISCLAIMS ALL OTHER EXPRESS OR IMPLIED WARRANTIES, INCLUDING WARRANTIES OF MERCHANTABILITY AND FITNESS FOR A PARTICULAR PURPOSE, AND LIABILITY FOR DIRECT, INCIDENTAL, CONSEQUENTIAL, OR SPECIAL DAMAGES. Some states do not allow the exclusion or limitation of incidental or consequential damages, so the above limitations may not apply to you. This warranty gives you specific legal rights, and you may also have other rights which vary from state to state.



211 Boston Street • Middleton, MA 01949 • Customer Service or Technical Service 800-7/BOSTIK • www.bostik-us.com